



**Info Sheet**  
Rotational Molding

## SURPASS® RMs245-U/UG Resin

Versatile performance for large tanks and a range of custom parts



Get an industry-leading combination of stiffness, toughness and ESCR in a wide range of applications with SURPASS RMs245-U/UG resin. This next-generation resin has achieved the best-in-class 1600 psi hydrostatic design basis (HDB) cell classification, increasing safety margins in tanks up to 20,000 gallons. In addition, outstanding melt flow and processing characteristics make RMs245-U/UG ideal for applications where light-weighting without compromising part stiffness is desired. Ultimately, molders can consolidate their resin portfolio and use RMs245 across a broad range of applications.

### Features

- Best-in-class 1600 psi hydrostatic design basis (HDB)
- UV 18+ design UV resistance
- 1000+ hour bent-strip environmental stress crack resistance (ESCR)
- NSF listed for standards 24, 51 and 61
- Exceptional whiteness

### Benefits

- Enables light-weighting of tanks up to 20,000 G & smaller molded parts
- Superior balance of stiffness, toughness and ESCR
- Higher productivity compared to 2.0MI tank grades
- Easy, consistent mold release properties

### Applications

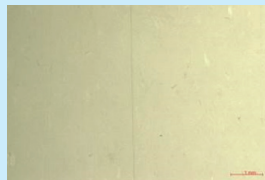
- Agricultural tanks up to 20,000 gallons
- Smaller tanks and custom parts traditionally made from MDPE
- Floating docks
- Road barriers
- Other applications requiring exceptional stiffness/toughness, very high ESCR or very high UV resistance

## Spotlight Improved cycle time in large tank applications

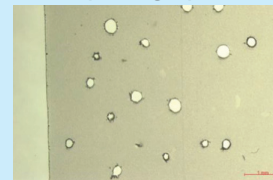


RMs245-U/UG enabled a 15% reduction in oven cook time and 6% increase in overall productivity compared to a competitive grade.

Actual side-wall cross-sectional photographs



RMs245-UG  
0.9477 g/cm<sup>3</sup> molded density



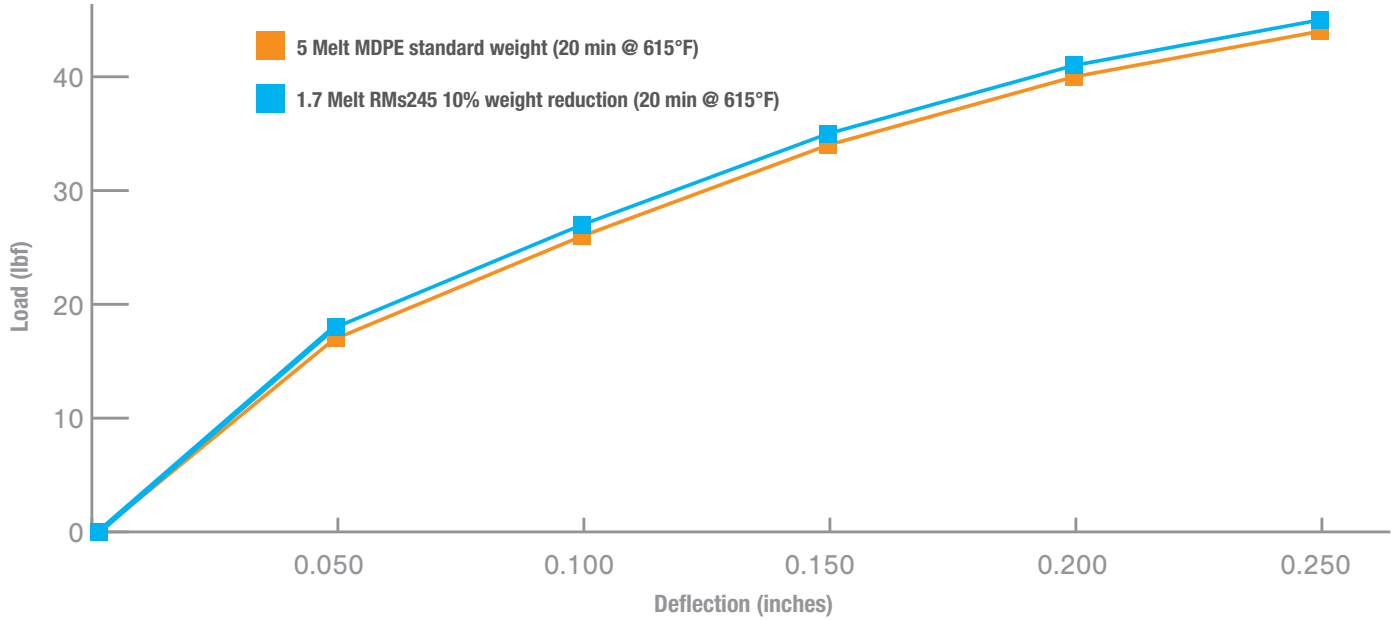
Competitive large tank resin  
0.9382 g/cm<sup>3</sup> molded density

**Both samples:**  
5000 gallon  
1200 lb. weight  
molded at 550°F for  
58 minutes

## Light-weighting benefits of RMs245-U/UG

Reduce product weight by up to 10% over 3-5 MI competitive resins with no loss of side wall stiffness or cycle time speed

### 275 Gallon Bio Diesel Tanks - Side Wall Stiffness



## Creep performance in large tank applications

RMs245-U/UG offers improved creep performance in addition to 10-20% weight reduction over tanks produced with a competitive hexene HDPE

